



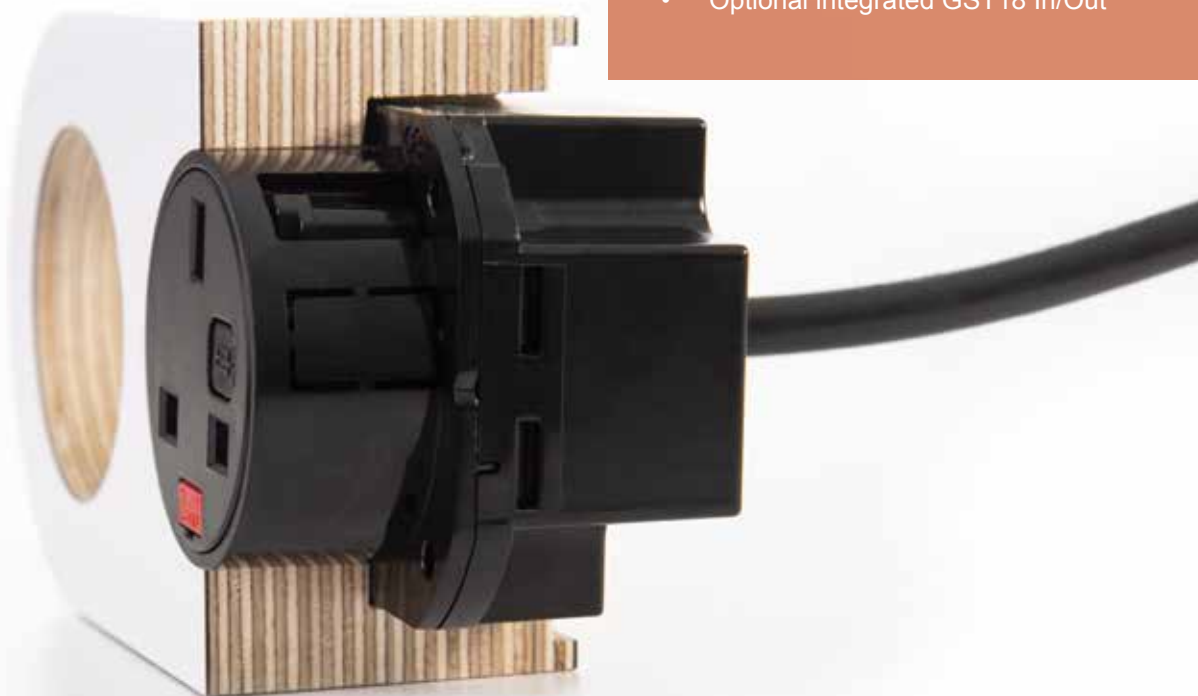
POP is a compact, single socket, power module designed specifically for flush installation in a wide range of furniture and interior surfaces where a very small visual footprint is preferred.

Fitting into a 50mm diameter aperture in any suitable hard surface, POP enables designers maximum flexibility in the location of convenient AC power and/or 25W USB charging sockets.

Multiple POP units of the same or different socket configurations can easily be linked with OE GST interconnect cables and supplied from a single power source.

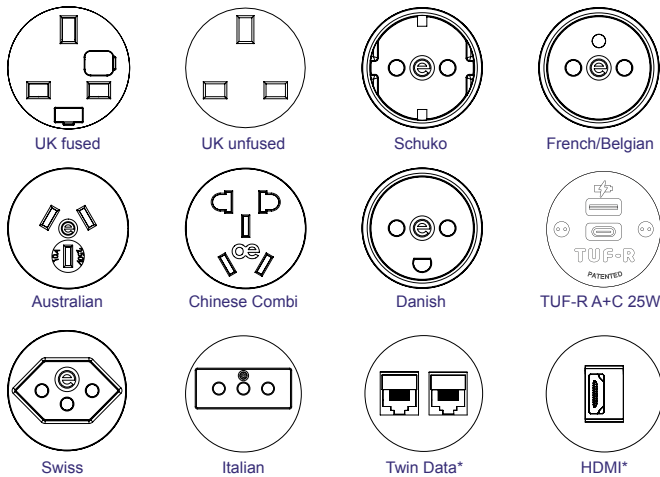
USPs

- Flush with surface installation
- Smallest possible visual footprint
- Choice of International AC sockets types
- Replaceable TUF charger option
- Optional integrated GST18 In/Out



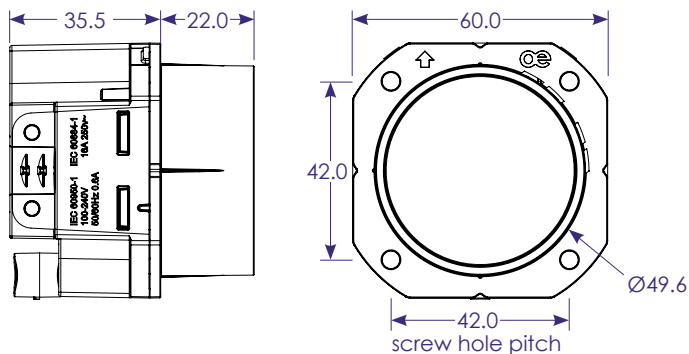
technical

Common Modular Components

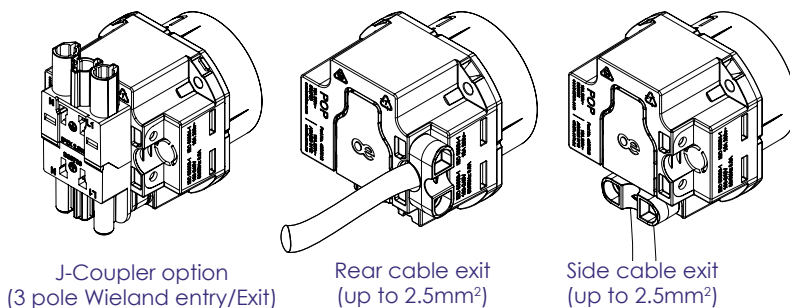


*POP front moulding can be used to install data & AV couplers/selected assys

Unit Dimensions

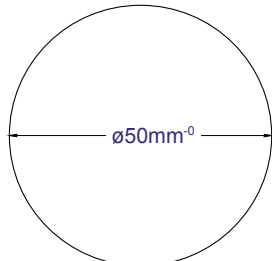


Power inlet options



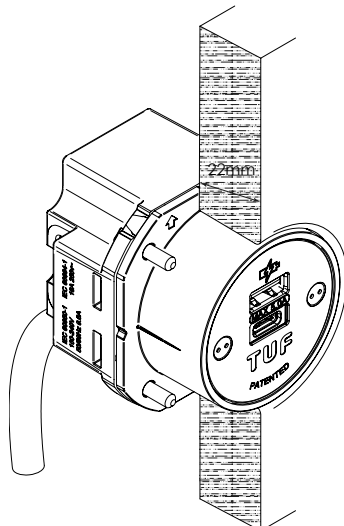
Fitting

Cutout dimensions



**Maximum panel thickness:
22mm**

If fitted into thinner material, POP will require spacing washers whilst thicker material will need rebating to 22mm



Configuration

Single OE 42mm type AC power socket, or OE "TUF" USB charging socket, Vertical or 45° socket orientation option

Construction

Body Polycarbonate
Socket Fascia Polycarbonate

Colours

Socket fascia Black, or Grey RAL7004
Body Black

TUF is available with a Stainless Steel fascia

Fusing

To enable compliance to BS6396 UK sockets can be ordered with 5 x 20mm anti-surge ceramic fuses, with colour-coded fuse clips to denote the rating (3.15A/5A)

Quality & Testing

All POP units are manufactured using ISO9001 quality controlled components and practices and are 100% tested before dispatch.

- Visual: Configuration and appearance.
 - Power sockets: Continuity, polarity, insulation & earth
 - USB charger: Output voltage and resistance
- "We test every pin in every socket in every module"

Power cord options

POP may be ordered with:

- Hardwired power cord to AC plug
- Hardwired power cord to GST18i3
- Hardwired power cord to OE J coupler
- Fitted with integral OE J coupler

CE marking

All units built with UK and European socket types are CE marked by OE Electronics as complying with:

- Electromagnetic Compatibility Directive 2014/30/EU
- Low Voltage Equipment Directive 2014/35/EU
- RoHS2 Directive 2011/65/EU

Certifications

POP has been designed and is manufactured to comply with applicable national/international safety and EMC standards for the country of intended use, utilising fully certified components.

Installation

Pop is designed for installation in 50mm diameter apertures in 22mm wood panels Thinner panels may require spacing washers whilst thicker panels will need rebating to 22mm.

POP units fitted with UK sockets, must be installed flush with the surface for BS1363 compliance.