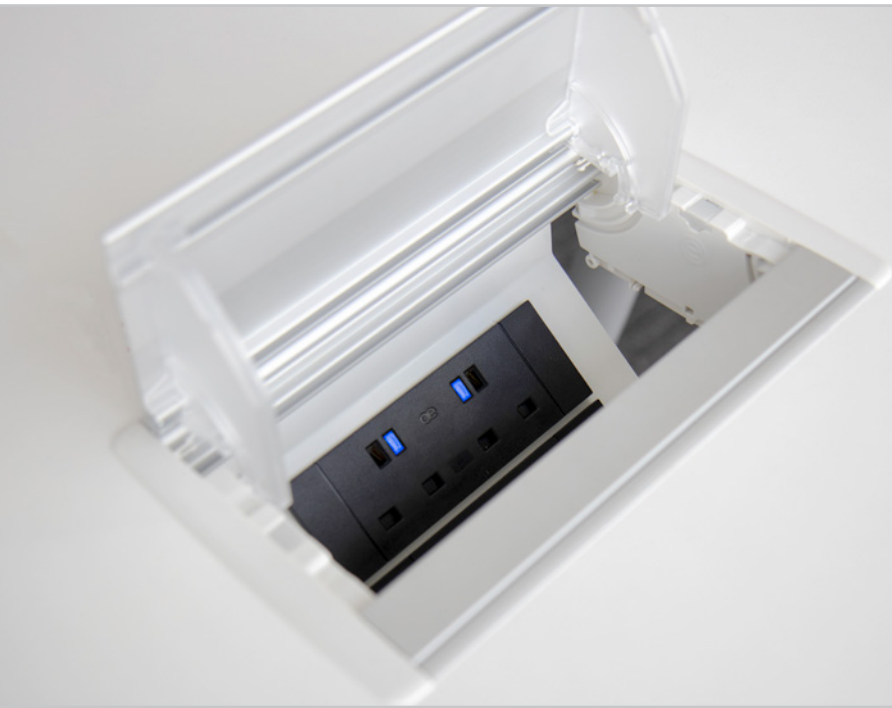


# QikFit Axxess

Our ever popular AXXESS in surface unit has been updated to have the option of accepting QikFit system power USB charging and Data/AV modules.

AXXESS QF combines a near flush aluminium hinged lid assembly which when open reveals a sturdy powder coated steel power and data undercarriage with cable storage area.

The compact AXXESS QF25 unit can be fitted with a 2 socket QF power module or QF TUF plus up to 5 data and AV connectors, making it ideal for single desks or small meeting tables. For larger tables the AXXESS QF45 unit with either 4 power sockets, or 2 sockets and two USB charging ports, plus up to 9 Data/AV will be ideal.



## USPs

- Soft wired
- Optional TUF A+C
- Lid sits flush when in use

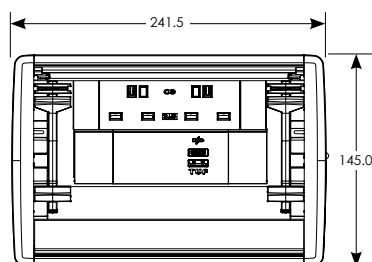
# technical

## Common Modular Components\*

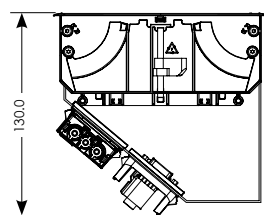


## QikFit AXXESS Dimensions

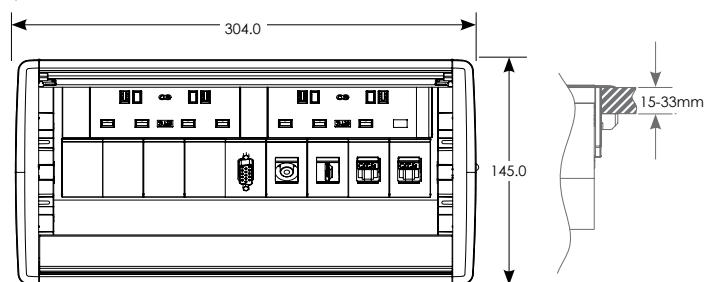
### QikFit AXXESS 25



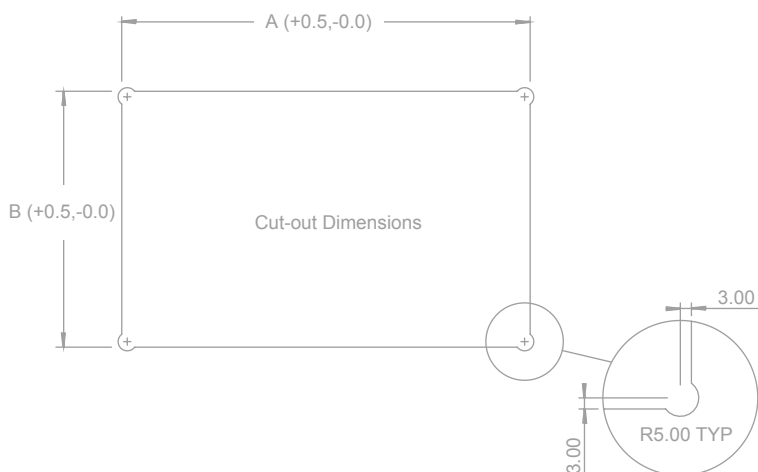
### QikFit AXXESS 25 & 45



### QikFit AXXESS 45



## Cutout Dimensions



PRODUCT	Dim A (mm)	Dim B (mm)
QF Axxess 25	221.00	138.50
QF Axxess 45	284.00	138.50

## Configuration

The QikFit AXXESS 25 can be fitted with the following QikFit module combinations, in **each** of the two stacked apertures:

- 1 x QikFit 2G power module **or**
- 1 x QikFit TUF plus 2 x QF5 Data/AV modules **or**
- 5 x QF5 Data/AV modules

The QikFit AXXESS 45 can be fitted with the following QikFit module combinations, in **each** of the two stacked apertures:

- 1 x QikFit 2G power module plus 4 x QF5 Data/AV modules **or**
- 1 x QikFit 3G power module (+ QF3 spacer) plus 2 x QF5 Data/AV modules **or**
- 2 x QikFit 2G power modules **or**
- 1 x QikFit 2G power module plus 1 x QikFit TUF module **or**
- 2 x QikFit TUF modules (requires two power cords, and at least one must be with the 90° female connector) **or**
- 9 x QF5 Data/AV modules

## Construction

Frame & Lid: Anodised aluminium extrusion plus moulded endcaps

Power/Data undercarriage: Powder coated mild steel

## Colours

Frame & Lid: Natural anodised aluminium with Grey endcaps.

Power/Data undercarriage: White RAL 9003

## Mounting

Integrated screw clamps for installation in surfaces 15-33mm thick

## Power Entry

Power/USB modules have GST 18i3 male connectors for connection of an OE starter lead or GST interconnect cable.

## Extended units

Extended Axxess aluminium lid units are available to special order in a range of sizes up to 1500mm long, a matching number of Q25 and Q45 steel undercarriages fitted with QF modules then providing a full length high density power and data unit.