

NYX LED

IP67 inground spotlight for architectural accent lighting



SIMON NYX LED CONFIGURATOR



MODEL SGF

S size, inground, flat lid

DIFFUSER	WIRED	INPUT VOLTAGE PROTECTION	OPTICS	COLOUR TEMP.	LED/POWER	CURRENT	DIMMING
PPF	0 m	230 V ac CII <input type="checkbox"/>	C09	WDL	3 LED 3 W	350 mA	1N
Flat prismatic polycarbonate	Without wiring	Mains power	Conical 9°	Warm daylight		HIGH EFFICIENCY	No dimming
			C28	CDL			
			Conical 28°	Lux, cold daylight			
			C45	BL			
			Conical 45°	Blue			

FINISHES

SS

AISI 316 Stainless Steel

SIMON NYX LED BASE REFERENCES



SGF

NYX LED, S size luminaire, set into the ground, flat cover, flat prismatic polycarbonate diffuser, 3 W power, 1N, with electronic gear. Luminaire **Class II**. No pre-wiring, supply voltage 230 V / 50 Hz SS ring finish (Stainless Steel).

COLOUR TEMPERATURE	OPTICS	POWER	LED	DIMMING	ORDER CODE
WDL Warm daylight	C09	3 W	3 LED	1N	11-1044-341
	C28	3 W	3 LED	1N	11-1044-343
	C45	3 W	3 LED	1N	11-1044-344
CDL Lux, cold daylight	C09	3 W	3 LED	1N	11-1044-141
	C28	3 W	3 LED	1N	11-1044-143
	C45	3 W	3 LED	1N	11-1044-144
BL Blue	C09	3 W	3 LED	1N	11-1044-941
	C28	3 W	3 LED	1N	11-1044-943
	C45	3 W	3 LED	1N	11-1044-944

ACCESSORIES

ACCESSORY	DESCRIPTION	ORDER CODE
	Junction box for installation in cement/concrete	11-1040-000

SIMON NYX LED TECHNICAL INFORMATION

PHOTOMETRIC DATA*

LED optical group

Colour temperature	CDL 6000 - 7000 K WDL 3000 - 3500 K BL Blue
--------------------	---

Colour Rendering Index	>70 (CDL) >80 (WDL)
------------------------	------------------------

LED lifetime (L70B10 at 25 °C)	50 000 h
--------------------------------	----------

Light flux	140 to 164 lm
------------	---------------

LOR performance	93% - 82%
-----------------	-----------

Luminaire efficiency	Up to 52.1 lm/W
----------------------	-----------------

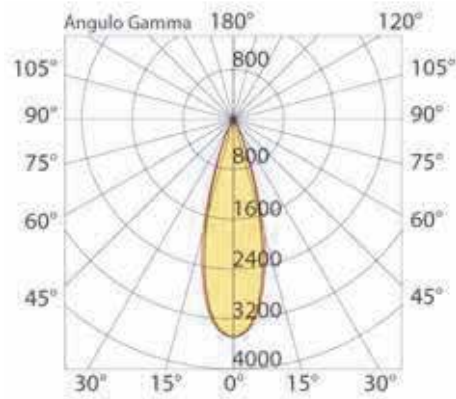
Photometric distribution	C09, C28, C45
--------------------------	---------------

LEDs	3
------	---

* Depending on model / ** On request

PHOTOMETRIC DISTRIBUTION

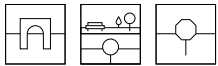
C28 optics



H	1	2	3	4	5
D m. (Alpha 15.6°)	0.56	1.1	1.67	2.23	2.78
D m. (Beta 15.6°)	0.51	1.01	1.52	2.03	2.54
Max. Lux	573	143	64	36	23
Med Lux	345	86	38	22	14

Beta = 26.8° + 26.8° G = 0.0

Alpha = 5.1° + 5.1° G = 0.0



ELECTRICAL PARAMETERS*

Power according to models	3 W
Operating temperature	-30 °C ... +70 °C
Dimming	1N (100%) No dimming
Supply voltage	100 - 240 V ac
Frequency	50/60 Hz

Luminaire electrical protection	Electronic – Class I
---------------------------------	----------------------

* Depending on model / ** On request

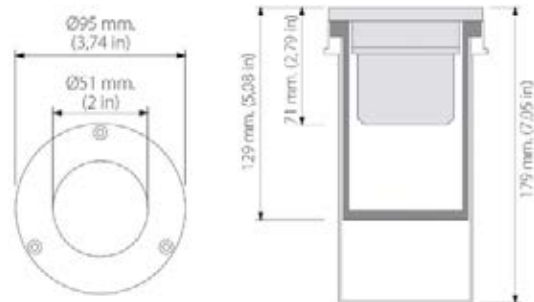
PHYSICAL DIMENSIONS

Lateral fixing	Inground. Requires installation junction box code 11-1040-000 for mounting in cement/concrete.
IP rating	IP67
IK rating	IK10
Weight	420 gr

MATERIALS

Body	Stainless steel
Lens	Polycarbonate
Recyclability	

DIMENSIONS



FINISHES

SS stainless steel
Decorative ring

CERTIFICATES

Luminaire according to: EN 60598-2-13 / EN 62493 / EN 55015 / EN 61547 / EN 50581



Warranty

2 years.

Items supplied and packaging

Packed in recyclable cardboard box with identification label to protect the product during transport and storage.

Maintenance

Keep the diffuser surface clean to obtain maximum light flux. Use a damp cloth without any aggressive products or detergents.
Lubricate the sealing rings and replace them when they become cracked.
Lubricate closures and/or hinges of moving parts.
Keep thermal radiation surface clean to prevent loss of light flux and shortening of the lifespan of the LEDs.